



By Tim Stewart, CEO/Manager

TREE TRIMMING IMPROVES SERVICE FOR ALL

One of the things I like best about spring is the natural beauty that sur-

rounds us. We are fortunate to have so many trees that offer beauty, shade, and a habitat for all sorts of birds and other wildlife. I'm sure you appreciate spring for much of the same reasons.

At Clark Electric Cooperative, we strive to balance maintaining beautiful surroundings and ensuring a reliable power supply by keeping power lines clear in rights-of-way (ROW).

While we recognize and appreciate the beauty of trees, there are three main benefits to tree trimming in right-of-way areas. However, before touching on the main reasons, let me explain what a "right-of-way" is and how it may impact you. A right-of-way is the land we use to construct, maintain, replace, or repair underground and overhead power lines. Rights-of-way enable the co-op to provide clearance from trees and other obstructions that could hinder the power line installation, maintenance, or operation. The overall goal of our vegetation management program is to provide reliable power to our members while maintaining the beauty of our community. Proactive vegetation management benefits co-op members in three tangible ways.

Safety First and foremost, we care about our members and put their safety and that of our lineworkers above all else. Overgrown vegetation and trees pose a risk to power lines. For example, if trees are touching power lines in our members' yards, they can pose grave danger to families. If children can

access those trees, they can potentially climb into a danger zone. Electricity can arc to a nearby conductor like a tree. A proactive approach also diminishes the chances of fallen branches or trees during severe weather events that make it more complicated and dangerous for lineworkers to restore power

Reliability Of course, one of the biggest benefits of a smart vegetation management program is reliability. Strategic tree trimming reduces the frequency of downed lines causing power outages. I'm sure you will recall the December 2021 tornado events that hit our service area. Trees were tossed around like toothpicks and caused extensive outages that took three days to restore and caused in excess of \$200,000 in damages. Did you know that trees are the number one reason for electric disruptions?



Damage from the December 2021 tornado

Affordability As you know, Clark Electric Cooperative is a not-for-profit cooperative, and that means we strive to keep our costs in check in order to keep our rates affordable. This extends to our approach to vegetation management. If trees grow too close to power lines, the potential for expensive repairs also increases. Here at Clark Electric Cooperative, we perform our vegetation management annually to help maintain the right-of-way. This cost accounts for

approximately \$500,000 this year alone. We recognize that people generally don't like to have trees trimmed or cut. However, this is a necessity to provide good reliability, affordability, and safe delivery of electricity. Effective tree trimming and other vegetation management efforts keep costs down for everyone.

Our communities are a special place. We appreciate the beauty trees afford, but we also know our members depend on us to provide reliable energy. Through vegetation management, we are better able to keep the power lines clear, prepare for future weather events, and secure the reliability of the grid.

CONSIDER POWER LINES WHEN PLANTING TREES

The rest of this month's article is devoted to planting trees and safe distances from power lines.

Whether you're planting a single tree in the front yard or several thousand trees to start a plantation, it's important to consider the species of trees and the location in which you plan to plant them. This is especially important if you are planting trees near overhead power lines.

Many people plant trees too close to power lines. They think that the trees will never get tall enough to grow into the power lines, or they simply forget to look up before they plant them.

Most trees will grow tall enough to touch power lines faster than you think. So take time to research your tree selection or consult with your local tree nursery for advice on which trees are appropriate for your landscaping area.

As the trees grow they can come into contact with the power lines and create power outages or momentary interruptions. However, the greatest concern is the safety risk that can be

2022 INCENTIVE REBATES

Every year members earn thousands of dollars in energy efficiency incentives through Clark Electric Cooperative and Focus on Energy programs. This year should be no different. We want to help you control your energy costs by helping you make your home as energy efficient as possible. So, check out the chart below for the incentives that are available in 2022.

For more information on Clark Electric Cooperative incentives, go to our website at www.cecoop.com. *Some restrictions may apply. For more information on Focus on Energy incentives, go to www.focusonenergy.com. Remember, if you are a member of Clark Electric Cooperative you may qualify for both program rebates. For your convenience, the Focus on Energy link is also located at the www.cecoop.com website.

In addition, don't forget to check for any Federal Tax Credits that may be available. Information can be found at www.energystar.gov.

A GOOD FRIEND AND STRONG LEADER

A Tribute to Former Director Tony Jarocki

Our sympathy to Darlene Jarocki and family on the loss of Tony Jarocki, who passed away on February 24, 2022. Tony served the members of Clark Electric Cooperative for 37 years as a director, holding various offices including seven years as president of the board, 10 years as vice president of the board, and 13 years as secretary-treasurer of the board. Tony was instrumental in the formation of the cooperative's subsidiary company, Clark Electric Appliance and Satellite Inc., and was one of the original incorporators of the company. Clark Electric Appliance and Satellite Inc., with the leadership and vision of this team, helped bring DirecTV to the rural areas of Clark, Taylor, Wood, Marathon, Chippewa, and Jackson counties. Tony's leadership, dedication, guidance, and friendship have left an everlasting impression on our organization. Tony will be truly missed.



SUMMARY OF 2022 ENERGY EFFICIENCY REBATES

		Total
Appliances & Recycling		
	incentive not to exceed 20% of cost	
Clothes Dryer (electric)	Must be ENERGY STAR appliance	\$25/each
Heat Pump Clothes Dryer	All heat pump dryers qualify	\$50/each
Clothes Washer	Must be ENERGY STAR appliance	\$25/each
Dehumidifier	Must be ENERGY STAR appliance	\$25/each
Dishwasher	Must be ENERGY STAR appliance	\$25/each
Refrigerator	Must be ENERGY STAR appliance & >= 10 cubic ft	\$25/each
Conservation		
	Incentive not to exceed 20% of cost	
Flow Restrictors – Faucet	1.5 gal/min or less, Capped at 50% of cost	\$1/each
Flow Restrictors – Shower	2.5 gal/min or less, Capped at 50% of cost	\$5/each
Smart Power Strip/Bar		\$5/each
Heating & Cooling		
	Incentive not to exceed 20% of cost	
Load Control Sign-Up Rebate (one-time)	AC Only (summer)	\$25/once
Heat Pump – Air Source & MiniSplit	SEER 14+, HSPF 8.2+ or EER 11.5+	\$400/ton
Heat Pump – Commercial Air Source & PTHPs	Under 20 ton: EER 11.5+ 20 to 60 ton: EER 10.5+ 60 ton & over: EER 10+	\$400/ton
Heat Pump – Geothermal		\$850/ton
Electric Thermal Storage Heat (ETS)		\$25/KW
ECM Blower Motor	Must be Variable Speed or EAE <= 670	\$35/unit
Lighting		
	Incentive not to exceed 20% of cost	
LED Bulb	Capped at 20% of cost	\$1/bulb
LED Exit Sign	Capped at 20% of cost	\$5/sign
Occupancy Sensor	Capped at 20% of cost	\$5/sign
LED Fixture	Fixture x Lumens = Quantity, Quantity/800, Capped at 20% of cost	\$1/800 Lumens
T5 Fixture	Fixture x Bulb = Quantity, Capped at 20% of cost	\$6/bulb/fixture
T8 Fixture	Replacement Only, Fixture x Bulb = Quantity, Capped at 20% of cost	\$4/bulb/fixture



Tree Trimming

Continued from page 15

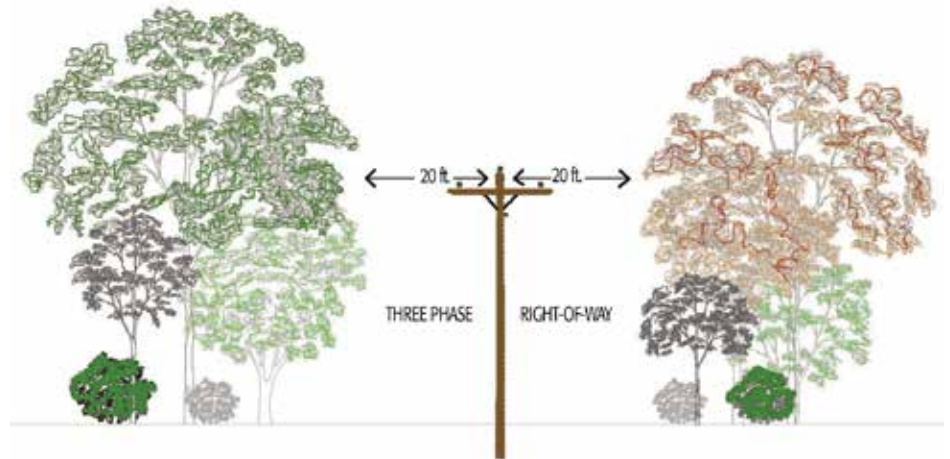
created when children climb trees near power lines.

As we move through the spring season and into summer, please take some time to consider a few things when planting, especially around power lines.

1. Clark Electric Cooperative requires 15 feet of clearance on both sides of the line for single-phase lines and 20 feet for three-phase lines.
2. Be sure to plant your trees far enough away from power lines so that when the trees are fully grown, there will still be 20 feet of clearance to the power line without the need for trimming.

3. Remember, if you chose to plant trees in the right-of-way or too close to the right-of-way, your trees may need to be trimmed or cut some day, and that day may come sooner than you think.

If you have trees that appear to be growing into power lines, contact Clark Electric Cooperative at 1-800-272-6188. Never try to prune them yourself. We have skilled professionals trained to safely prune and trim trees for electric line clearance.



Motors, Fans & Other	Incentive not to exceed 20% of cost	
Exhaust Fan	Fans under 36" must be ≥ 18 cfm/watt Fans 36" and over must be ≥ 21 cfm/watt AMCA/ University of Illinois BESS Lab Rated	\$1/inch
Circulation Fan	Fans under 36" must be ≥ 18 cfm/watt Fans 36" and over must be ≥ 21 cfm/watt AMCA/ University of Illinois BESS Lab Rated	\$1/inch
Dairy Plate Cooler/Well Water Pre-Cooler		\$500/each
Dairy Refrigeration Heat Recovery w/Electric Backup	Used with controlled electric water heater	\$300/each
Electric Forklift Battery Charger	Must be on load control	\$200/each
Low/Zero Energy Livestock Waterer	500 watts or less, insulated tank	\$50/each
Commercial Vending Machine Controls		\$25/each
Scroll Refrigerator Compressor	Maximum rebate is \$1,000/compressor	\$30/HP
Variable Frequency Drive (VFD)	\$1,000 cap, minimum 1 HP to qualify	\$30/HP
Water Heating	Incentive not to exceed 20% of cost	
Water Heater	50-80 gallons EF $< .90$, LM Program	\$50/each
Residential High Efficiency Water Heater	75-99 gallons, EF $\geq .90$, LM Program	\$300/each
Residential High Efficiency Water Heater	100 gallons +, EF $\geq .85$, LM Program	\$500/each
Commercial Water Heater	75-99 gallons, LM Program	\$300/each
Commercial Water Heater	100 gallons +, LM Program	\$500/each
Heat Pump Water Heater	Integrated, EF 2.00+	\$400/each
Solar Storage Water Heater w/Electric Backup	75-99 gallons	\$150/each
Solar Storage Water Heater w/Electric Backup	100+ gallons	\$300/each
Flow Restrictors – Faucet	1.5 gal /min or less	\$1/each
Flow Restrictors – Shower	2.5 gal/min or less	\$5/each
Audits/Assessments	Incentive not to exceed 20% of cost	
Audit Recommended Improvements	cost of improvements up to 20%, \$500 cap	varies-max \$500
Compressed Air Audit	cost of audit up to 20%, \$500 cap	varies-max \$500
Touchstone Energy – New Home		
Touchstone Energy Home Program	Program/Code Requirements, \$500 cap	\$500
EV Chargers	Incentive not to exceed cost of equipment	
Electric Vehicle Charging Station	Must be on load control	\$400/each
Smart Electric Vehicle Charging Station w/integrated metering	Must be on load control	\$800/each

MAY IS ELECTRICAL SAFETY MONTH

We use electricity every day. This invisible force has become so commonplace that it can be all too easy to overlook possible electrical hazards, even in the safety of our own homes. May is Electrical Safety Month, and a good time to put the most important safety tool you have—your brain—to work.

Knowing what to be on the lookout for and knowing the safe steps to take can make all the difference in preventing accidents. Safe Electricity offers the following home safety tips to help arm you with the knowledge to stay safe and help others stay safe.

- Always read and understand the operator's manual before using an appliance or tool.
- Make sure recognized safety laboratories, like UL, ETL, or CSA have certified the electrical appliance, tools, and cords you plan on using.
- Never use a product with a damaged electrical cord.
- Never use extension cords on a permanent basis.

- Only use extension cords properly rated for the devices you plan to plug into it.
- For the safety of children in your home, install tamper-resistant outlets or protective coverings.
- If your outlets are warm to the touch, immediately shut them off at the circuit breaker, and contact a qualified electrician to make repairs.
- Install ground fault circuit interrupter (GFCIs) in areas that may be wet or damp. GFCIs help protect against electrical shock. Use the test and reset button monthly to ensure they are working properly.
- Never use power tools outdoors if it is raining or the ground is wet.
- If an appliance repeatedly blows a fuse, trips a circuit breaker, or has given you an electrical shock, immediately unplug it and have it repaired or replaced.

To learn more about electrical safety, visit SafeElectricity.org.



UP, UP AND AWAY!


It's time to go out and play!

Remember, don't fly a kite, drone or remote-control toy or plane near a power line or substation. It could get tangled in the power line or other electrical equipment.

If this happens, leave it alone and tell an adult to call your electric utility for help.



Safe Electricity.org®



*** REMEMBER & HONOR ***
MEMORIAL DAY

Clark Electric Cooperative's
office will be closed
Monday, May 30



CALL FIRST!

Call Diggers Hotline at 811 at least three working days before you start digging. It's a free, one-stop source for locating underground utilities.



Tim Stewart, CEO/Manager

1209 West Dall-Berg Road, P.O. Box 190, Greenwood, WI 54437
email us at info@cecoop.com or tnelson01@cecoop.com
www.cecoop.com



**Clark Electric
Cooperative**

Your Touchstone Energy® Partner 